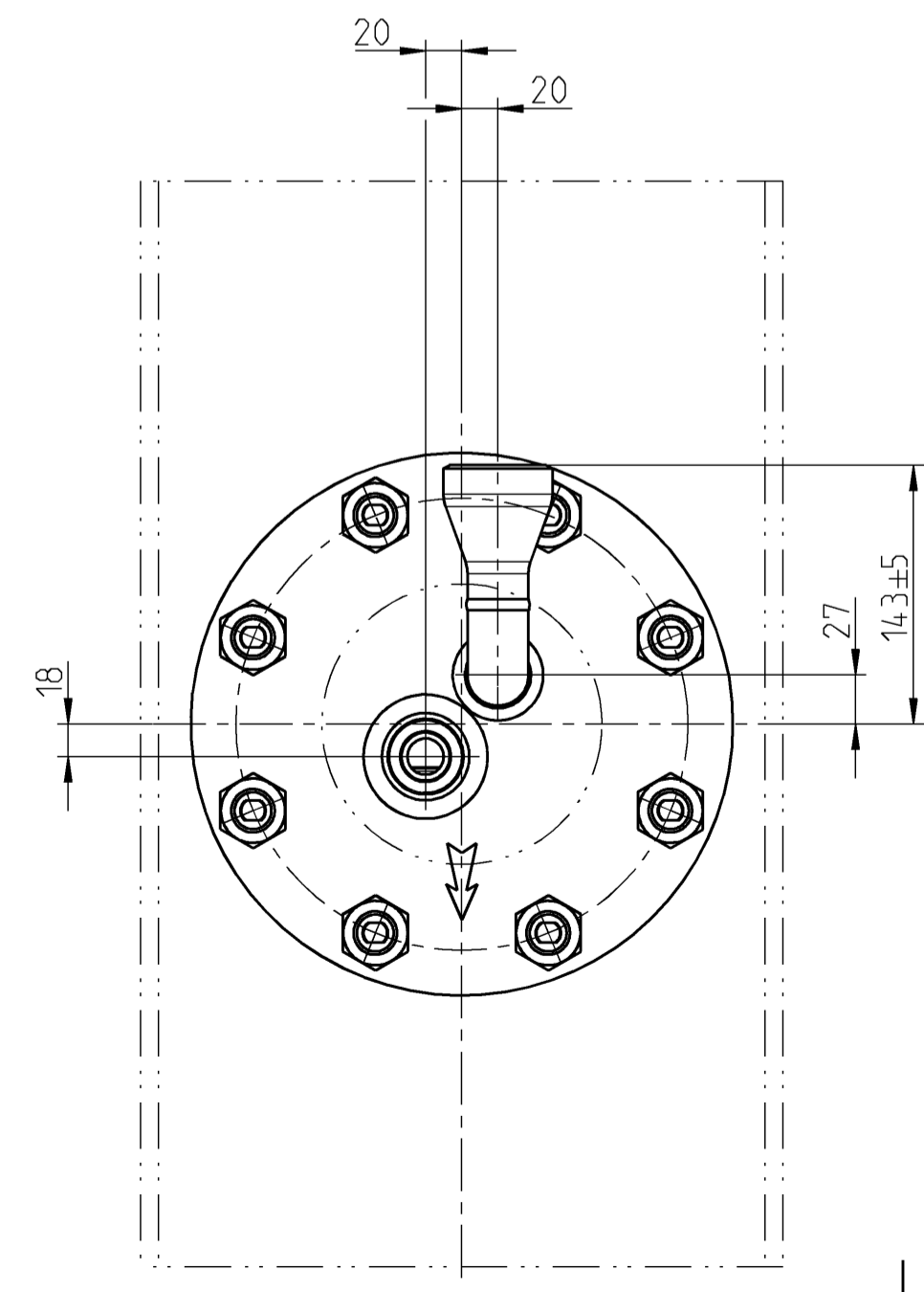
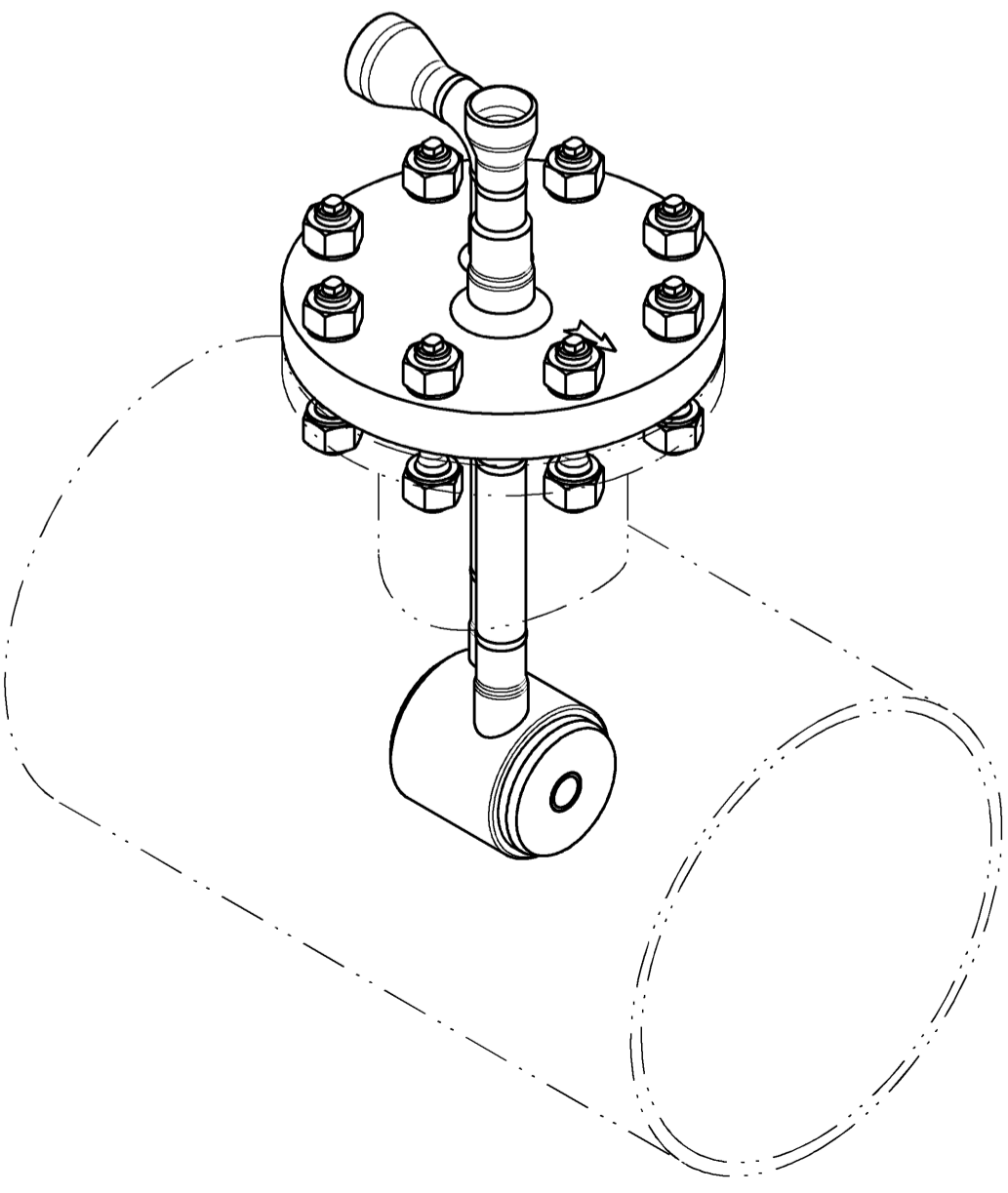


1:5



ATTENTION!
Provide water trap ("water seal") between cooling water control valve and motive steam cooler!
(Temperature protection cooling water control valve)

Weight
Weight actuator system: $m_{AE} = \text{ca. } \dots \text{ kg}$
Weight armature: $m_{AR} = \text{ca. } 33.0 \text{ kg}$
Weight, Total: $m_{ges} = \text{ca. } 33.0 \text{ kg}$

Tag-No.		10 SAE40 AH001	
Werkstoff/MATERIAL	-	-	-
Gewicht/WEIGHT	-	-	-
Oberflaechenbehandlung/SURFACE TREATMENT	-	-	-
Rohteil/RAW PIECE	-	-	-
Rev/REV	Kurzbeschreibung/SHORT DESCRIPTION	Datum/DATE	Name/NAME
Zul. Abweichung/TOLERANCE	Projektionsmethode/Projection Method	Oberflaeche/SURFACE	Massstab/SCALE
DIN ISO 2768 - m	DIN ISO 5456-2	<ul style="list-style-type: none"> ✓ = $\sqrt{Rz 100}$ ✓ = $\sqrt{Rz 25}$ ✓ = $\sqrt{Rz 6,3}$ ✓ = $\sqrt{Rz 2,5}$ 	<ul style="list-style-type: none"> Bearbeitung 20.05.2022 Feldmann PREPARED Pruefung 23.05.2022 Schueler CHECKED Freigabe RELEASED Ersatz fuer - Ersetzt durch -
Benennung		Verwendung	
Treibdampfkuehler Typ 1		5504453 - Pos.1.1 von Rohr ARCA BV - "aeb Amstendam"	
Format/SIZE		Zeichnungs-Nr./DRAWING-No.	
C - 5504453-11-MB		Rev/REV	
		0	

Datei/FILE: "5504453-1-1-MB-TDK"